

IATX-300U-96DC
300 Watts


The IATX-300U-96DC is a DC-DC metal enclosed ATX power supply with nominal 110V DC input, and features an ATX output (3.3V/5V/-5V/12V/-12V/5V stand-by), 300 watt output rating and built-in fan. It is designed for use in ATX personal computers, workstations or equivalent systems.

Key Features:

- 300W DC-DC 110V input switching power supply
- Metal enclosed, ATX output
- Power Good/Power Fail Signal
- +5V Standby & Remote On/Off
- MTBF>135,000 hr. Mil-217F

Input Specification

Input Type	Input Voltage	Input Current	Inrush Current
DC	72VDC to 136VDC	5A at 110VDC	10A at 110VDC

Output Specification

Outputs	+5V	+12V	-12V	-5V	±3.3V	±5Vsb
Minimum Output Current	2A	0.1A	0A	0A	0A	0A
Rated Output Current	25A	10A	1A	1A	8.0A	0.72A
Maximum Output Current	30A	15A	2A	2A	15A	1.2A
Line Regulation	1%	1%	1%	1%	1%	1%
Load Regulation	3%	5%	2%	2%	2%	3%
Ripple and Noise (peak to peak)	50 mV	100 mV	100 mV	100 mV	50 mV	100 mV
Efficiency	> 65%					
MTBF	116,858 hours at 50 °C					

Interface Signals and Internal Protection

Power On/Off	The TTL compatible signal (active low) is use to switch ON the main output. When power is disconnected from secondary common, all outputs except +5Vsb shall turn off.
Power Good Signal	At power start-up, the power good signal will increase between 100ms to 500ms after all output DC voltages are within regulation limits.
Power Fail Signal	The power fail signal will fall at least 1ms before any of the output voltages lower than the regulation limits.
Overload Protection	Built-in crowbar circuit will automatically shut down the outputs to avoid damaging the external circuits. The trip point of O.V.P. circuit is around 5.7V to 7.0V.

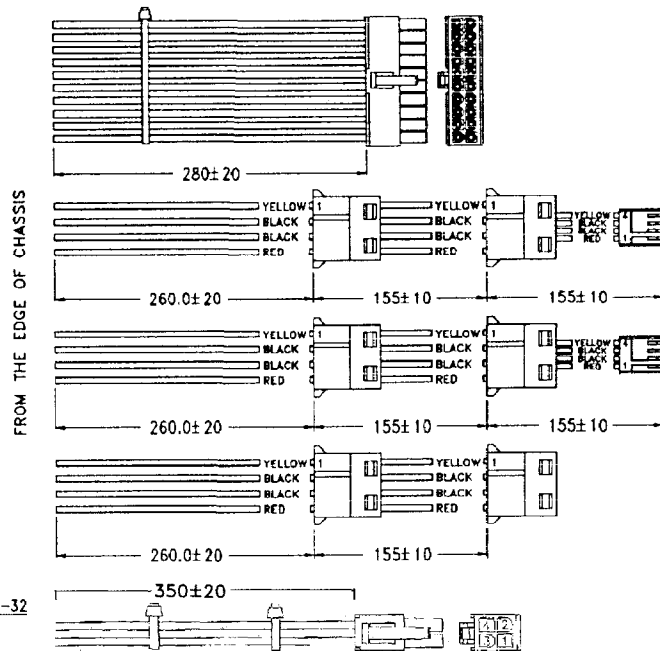
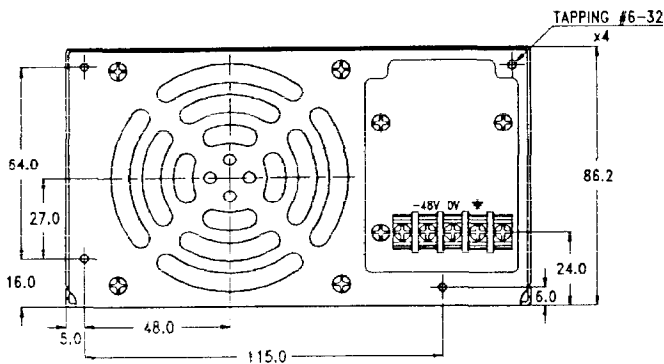
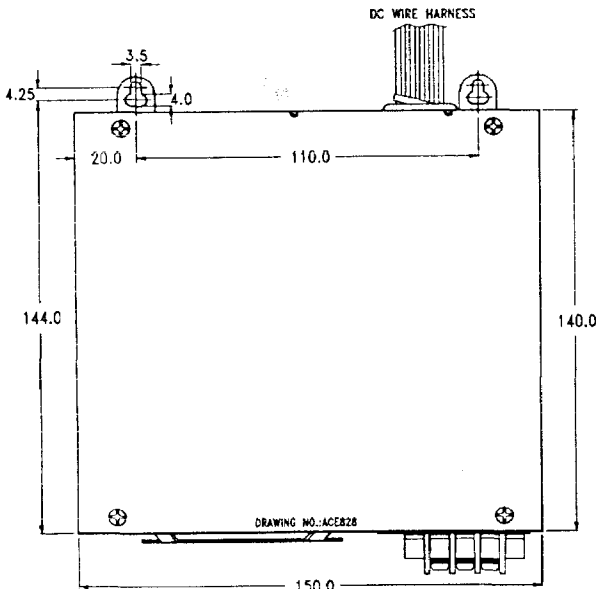
Safety Approvals, EMI and EMS specification

Safety	IEC 60950, EN 50155: 2001
EMS	EN 61000-4-2,EN 61000-4-3,EN 61000-4-4,EN 61000-4-5 EN 61000-4-6,EN 61000-4-11
Radiation/Conduction	FCC class "B", EN 55022 class "B", EN 55011 class "B"

Environment Specification

IATX-300U-96DC
300 Watts

Operating Temperature	0~40 °C
Storage Temperature	-40~75°C
Altitude (max)	up to 10,000 ft
Dimension	
Width x Length x Height	150x140x86.2 (mm)



Wire Color	VOLTAGE
ORANGE	3.3V
RED	5V
YELLOW	12V
BLUE	-12V
GREY	P.G
WHITE	-5V
BLACK	GND
PURPLE	+5Vsb
GREEN	POWER ON

Dimensions (shown in mm as above): Tolerance specified is +/-0.4mm between mounting holes, +/-0.8mm for other dimensions.

DC Connectors: 3 position terminal blocks

DC connectors:

ATX: Molex 39-01-2200 or equivalent

Disk drive: AMP 1-480424-0 or equivalent.

3 1/2" floppy drive: AMP 171822-4 or equivalent.

P4: Molex 39-01-2045 or equivalent.